



LEAPTON  
SOLAR

1 Tier-1  
BNEF

LEAP FROM JAPAN TO THE WORLD

日本からの太陽光発電スマート製造



PART1

WHO IS LEAPTON ?





# ABOUT LEAPTON



BloombergNEF Tier-1 Listed



Customers From 37 Countries



1.5GW Capacity



400+ Employees Worldwide



Full Automated Line



JPN Land Holder

LEAPTON ENERGY – the world’s leader of PV module and system supplier from Japan. BloombergNEF Tire-1 listed. Since last 9 years of experience, Lepton Energy has built a deep subject matter expertise in solar system installations and solar module manufacturing.

Our solar systems know-how and expertise can provide the most suitable panels for each solar system. High quality solar modules for 25 years power output.



# FROM JAPAN TO THE WORLD

Leapton Energy is a Japanese company and is also a project developer in Japan. It holds around 80 pieces of land reserve for power plant development. Leapton's own brand of PV module is sold to 37 countries and regions.

- More than 300 distributors
- 16 bank finance support
- Member of JPEA
- Member of JPEC



EUROPE

- 🏠 Europe warehouse
- 📍 Rotterdam, Netherlands



WORLD

- 🏭 Chinese Factory
- 📍 Changshu, China



JAPAN

- 🏢 Japanese Company
- 📍 Kobe, Japan
- 📍 Tokyo, Japan



# MILESTONE

2012

- **Leapton Energy Co., Ltd.** was established in Kobe, Japan.

Main Business: Japan and overseas PV system and sales.

2013

- **Leapton Engineering Technology (Shanghai) Co., Ltd.** was established in Shanghai, China.

Main Business: Chinese PV System development and sales.

2014

- **Leapton Energy Co., Ltd. - Tokyo Branch** was established in Tokyo, Japan.

Main Business: Japanese PV power stations development, management and after-sales maintenance.

2017

- **Leapton Solar (Changshu) Co., Ltd.** was established in Changshu, China.

Main Business: PV solar modules production and overseas sales.

- Launch of PV module manufacturing and production capacity reach 300MW.

2018

- Leapton has more than 300+ employees worldwide.
- Production capacity reach 600MW.

2020

- New factory (phase 2, land 40000m<sup>2</sup>) , signing ceremony, located in Yushan High-tech Industrial Park, Changshu, Jangsu, China
- BloombergNEF Tier 1 Listed PV manufacturer
- Leapton new factory (first phase 1.5GW capacity) construction completed and starts production

2021

- Production capacity reach 1.5GW.
- **Suzhou Yuli Energy Technology Co., Ltd.** was established in Changshu, China.

Main Business: Chinese PV power stations development, management and after-sales maintenance.

2012



2013



2014



2020

Company Name	Country	Market Segment	Capacity (MW)	Year
Leapton Energy Co., Ltd.	China	PV	1.5	2020

2021



2020



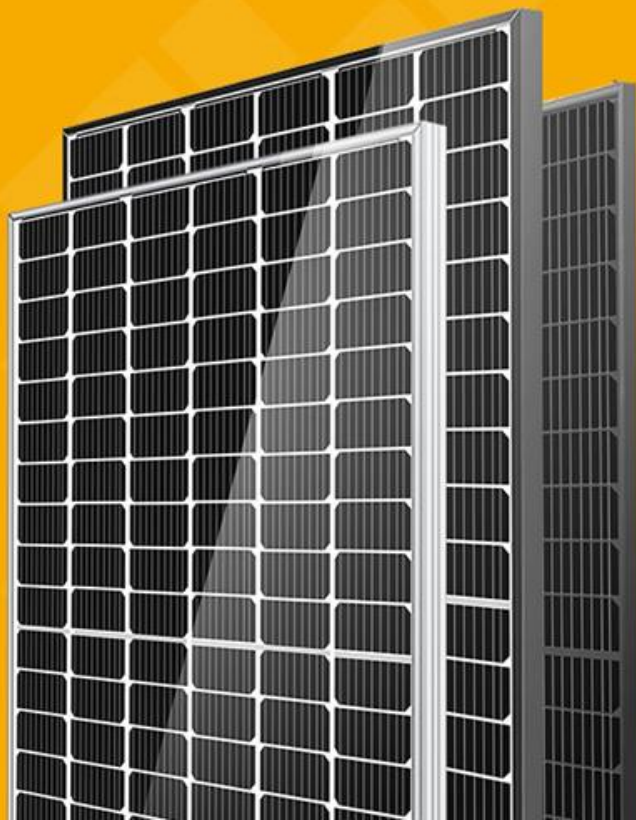
2017





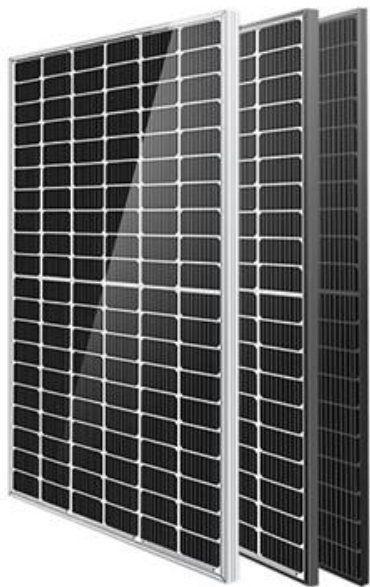


Monocrystalline  
**PRODUCTS**



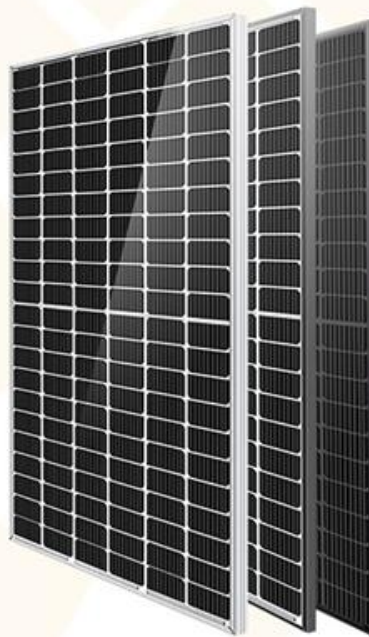
## 166mm Cell Size — 9BB Half-Cell Series

- 9BB Half-Cell, More uniform current collection capability.
- 166mm\*166mm cell size.
- Small size for easy installation, Suitable for roofing.



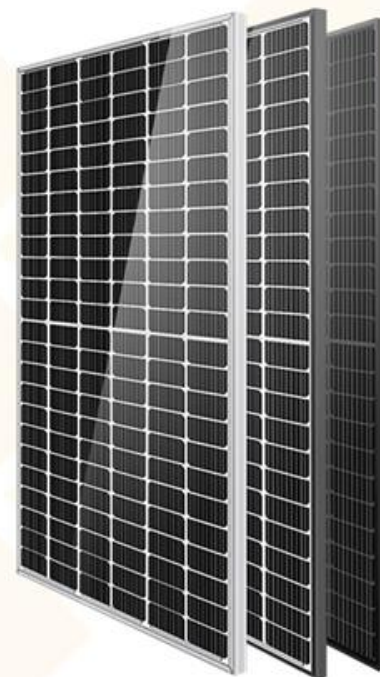
- LP166\*166-M-60-MH 360-380W

Monocrystalline



- LP166\*166-M-66-MH 400-420W

Monocrystalline



- LP166\*166-M-72-MH 430-450W

Monocrystalline



# Monocrystalline PRODUCTS



## 182mm Cell Size — MBB Half-Cell Series

- MBB Half-Cell, lower internal current, lower internal resistance loss.
- 182mm\*182mm cell size, medium size.
- More spectrum response, more output.
- Bidacial double glass module, provide an additional 5~25% output.



- LP182\*182-M-54-MH 390-410W
- LP182\*182-M-60-MH 440-460W

Monocrystalline

Monocrystalline



- LP182\*182-M-66-MH 485-510W

Monocrystalline



- LP182\*182-M-72-MH 530-550W

Monocrystalline



- LP182\*182-M-78-MH 580-605W

Monocrystalline





Monocrystalline  
**PRODUCTS**

---



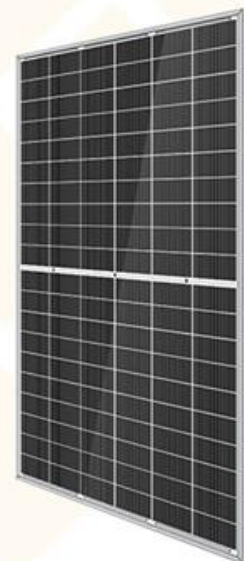
• LP210\*210-M-50-MH 490-505W

Monocrystalline



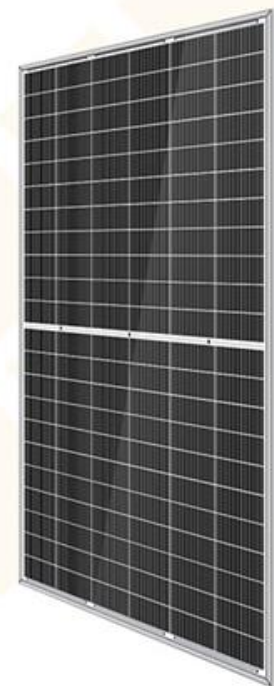
• LP210\*210-M-55-MH 540-555W

Monocrystalline



• LP210\*210-M-60-MH 590-605W

Monocrystalline



• LP210\*210-M-66-MH 650-665W

Monocrystalline

## 210mm Cell Size — MBB Half-Cell Series

- MBB Half-Cell, lower internal current, lower internal resistance loss.
- 210mm\*210mm cell size, higher output power.
- More spectrum response, more cost-effective.
- High power generation from a single module.
- suitable for large projects.





PART2

WHY IS LEAPTON ?

日本からの太陽光発電スマート製造


LEAP FROM JAPAN TO THE WORLD

# JAPANESE BANK SUPPORT


Low cost of Japanese bank financing

## Banks in cooperation

 **みずほ銀行**

 **三菱東京UFJ銀行**

 **りそな銀行**

 **関西みらい銀行**


 **みなと銀行**

 **商工中金**  
SHOKO CHUKIN BANK

 **日本政策金融公庫**

 **阿波銀行**


 **徳島銀行**

 **中国銀行**


 **伊予銀行**

 **神戸信用金庫**

 **高知銀行**

 **兵庫信用金庫**  
HYOSHIN

 **播州信用金庫**

 **日新信用金庫**

 **池田泉州銀行**  
SIHO

## Banks under negotiation

 **三井住友銀行**  
SMBC SUMITOMO MITSUI BANKING CORPORATION

 **東京スター銀行**

 **広島銀行**

 **山口銀行**

 **百十四銀行**  
しい出会い ふくらむ未来

 **近畿産業信用組合**

 **但馬銀行**

 **新生銀行**





# LEAPTON

## CREDIT CERTIFICATE

dun & bradstreet



### Business Information Report

This report prepared by Huaxia DBS China is sent to answer your inquiry on:

**Leapton Solar (Changshu) Co., Ltd.**  
D.U.N.S.® NUMBER: 55-448-6158

Prepared for : Leapton Solar (Changshu) Co., Ltd.  
Subscriber Key : 927160122  
Delivery Date : Aug 12, 2019  
Printed on : Aug 13, 2019  
Inquiry Date : Aug 05, 2019  
Inquiry Subject : 信用评级 (美国) 融资公司  
Inquiry Address : 常州  
Inquiry Phone/Fax :  
Inquiry Reference : CS Dept.

#### DBS Compliance Report Updated to Version 6.0\*

In Jun. 2016, Huaxia Dun & Bradstreet China completed a major update to the entire product family of Compliance Report, optimizing scope of information retrieval, content architecture and appearance design to deliver more professional and friendly experience to users.

The updated Version 6.0 encompasses China Business Compliance Report, China Business Consolidated Assessment Report and China Association Compliance Report, which helps companies understand business partners' compliance risks in a fast and objective manner, adapt to complex regulatory environments and uncertainties to avoid potential adverse influences and losses.

#### Highlights:

- **Complete screening:** identify regulatory compliance risks by screening adverse media information and public records through multiple local and international channels.
- **Precise positioning:** identify potential compliance risks of target groups and their affiliates through screening their litigation records and adverse media coverage.
- **Rapid judgment:** help clients identify risk points of partners with risk signals and make business decisions based on our prevention and improvement advice out of professional judgment.
- **Multi-faceted analysis:** evaluate credit risks while screening compliance risks, to give clients multi-faceted insights of potential partners to facilitate their business decision.

To subscribe the new version, please contact your customer representatives or call 400-820-3536.

#### CURRENCY

All monetary amounts quoted in this report are shown in Renminbi(RMB) unless otherwise stated.

#### REMARK

"-" stands for "Insufficient information" or "No comments".

#### Risk Assessment



**D&B Rating** 3A2 (Previous 3A3)

(Tangible Net worth  
3A 8,500,000 -  
3A2 84,999,999)

Composite Appraisal 2 Good



leapton solar risk assessment: risk warning below average risk, payment index close to 80, no overdue arrears and financial strength of 3A2.

TEIKOKU DATABANK

#### 事業構成 [主要分] (単位: %)

	平29.3	平30.3	平31.3
太陽光発電機器販売 (国内)	90.0	75.0	45.0
太陽光発電機器販売 (海外)	—	20.0	45.0
太陽光発電機器販売 (国内)	9.9	4.9	5.0

#### 評価

##### 信用要素別評価

業 歴 (1~5)	3	企業活力 (4~19)	13
資本構成 (0~12)	6	加 点 (+1~+5)	—
規 模 (2~19)	6	減 点 (-1~-10)	—
損 益 (0~10)	9	合 計 (100)	60
資金現況 (0~20)	10		
経 営 者 (1~15)	13		

##### 信用程度

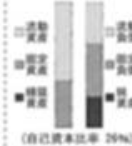
信用程度	平28	6.24	54
A (86~100)	29	2.13	54
B (66~85)	7	4	57
C (51~65)	30	8	59
D (36~50)	31	2.26	59
E (35以下)	—	—	—

##### 近年の評点推移

#### 当期純利益



#### 貸借対照表



TEIKOKU DATABANK CCR

5-20 MINAMI AOHYAMA 2-CHOME, MINATO-KU, TOKYO 107-8002 JAPAN  
PHONE: 03-5775-3000 FAX: 03-5775-3110

Date: April 12, 2018  
Reference: \*\*= Physically split; \*\*A= Not Available

COMPANY NAME: LEAPTON ENERGY KANGSHU RANSHA  
SINGAPORE STYLE: LEAPTON ENERGY CO., LTD.  
ADDRESS: 4F, Tower Building, 1-2-1, Aomi-cho, Chuo-ku, Koto City, Hyogo 650-0021 Japan  
TELEPHONE: 078-921-1021  
REGISTERED ADDRESS: Tower Building, 1-2-1, Aomi-cho, Chuo-ku, Koto City, Hyogo, Japan  
URL: http://leaptonenergy.jp  
E-MAIL: info@leaptonenergy.jp  
TEL (publications): NA

CORPORATE NUMBER: 21400187018  
TDB COMPANY CODE: 01600441  
TIC: Primary Law 4001 Secondary Law  
STOCKS: Unlisted  
SECURITIES CODE: None  
EDUCATIONAL: Media Site  
INCORPORATED: July 2012  
CAPITAL: 100,000,000 Yen  
LINE OF BUSINESS: Sale of solar power generation equipment and systems (power conditioner, inverter, etc.)  
SALES: 4,198,043,000 Yen (as of 3/31/2017)  
BANKS: Main Bank (Shizuoka Office): Bank of Tokyo-Mitsubishi UFJ (Shizuoka)  
EMPLOYEES: 28

CREDIT RATING

CREDIT FACTORS	SCORE	WEIGHT	CREDIT RANGE
History	1- 3	8	[ ] A (86 - 100)
Net Worth	0- 12	8	[ ] B (66 - 85)
Business Trade	2- 10	8	[ ] C (51 - 65)
Profitability	0- 10	8	[ ] D (36 - 50)
Financial Condition	0- 20	10	[ ] E (35以下)
Management	1- 11	10	[ ] F (35以下)
Business Stability	4- 10	11	[ ] G (35以下)
Additional Marks if necessary	+1 - +5	—	[ ] H (35以下)
Default Marks if necessary	-1 - -10	—	[ ] I (35以下)
TOTAL (100)	—	100	[ ] E (Below 50)

\*This is a subject that the two sides for the first time credit scores are not sufficient to reflect the actual status of the company. When additional data will be given.

The TEI (Teikoku Database Internal Credit Rating) is used exclusively for Teikoku Database's information in order to set the business credit of companies in Japan. The credit rating of the TEI are based on Japan Business Internal Credit Rating which is established by Ministry of Internal Affairs and Communications, one of the governmental office in Japan.

REMARKS: Information as of July 04, 2017

PLEASE NOTE: This report is based on the information and data provided by the company. The report is intended for the use of the TEIKOKU DATABANK (TEI) in CREDIT RATING. It is not intended for any other purpose. TEIKOKU DATABANK (TEI) does not guarantee the reliability of the report and shall not be liable for any loss or damage caused by the report or other use of the report. The user of the report agrees to indemnify and hold TEIKOKU DATABANK (TEI) harmless from any and all claims, damages, and expenses, including reasonable attorneys' fees, arising from the use of the report.

It ranks 702nd in Japan and is in the top 7.5% of the country's rankings.



# BloombergNEF TIER-1 LISTED

BloombergNEF Tier-1 Listed not only represent the promotion of Leapton's own brand credibility and the enhancement of market competitiveness, but also are recognized by the international community for the quality of our products. Tier-1 enterprises can participate in the bidding of government projects and help the company's customers to obtain bank project financing smoothly in the future.

Leapton Energy is also one of the few Japanese companies to be listed Tier1, which helps our local customers in Japan obtain better bank financing support and complete large-scale photovoltaic power station projects more smoothly.



Product Quality Approval



Government Project Bidding



Bank Financing Support



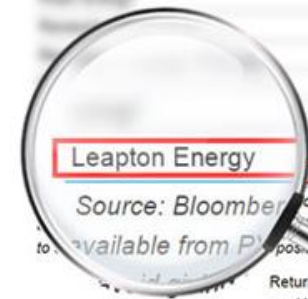
International Recognition

### 3.4. Tiering

Table 4 shows the solar module makers meeting BloombergNEF's Tier 1 criteria as of 1Q 2021.

Table 4: Photovoltaic module manufacturers meeting BloombergNEF's Tier 1 criteria as of 1Q 2021

Firm/ brand	Annual module capacity, MW/year	Firm/ brand	Annual module capacity, MW/year
Leapton Energy	600		



Source: BloombergNEF. Note: \* denotes a company for which technical due diligence reports are available from PV InfoLink. Contact Tara.Doyle@pvel.com for details. Brands are shown in reverse alphabetical order to the position in the list is significant. Corrected to exclude Talesun.

Returning to the list after being removed from the list after further projects were disclosed. Newly removed are Hengdian Diodes and LG Electronics after not meeting the six-bank two-year criterion.

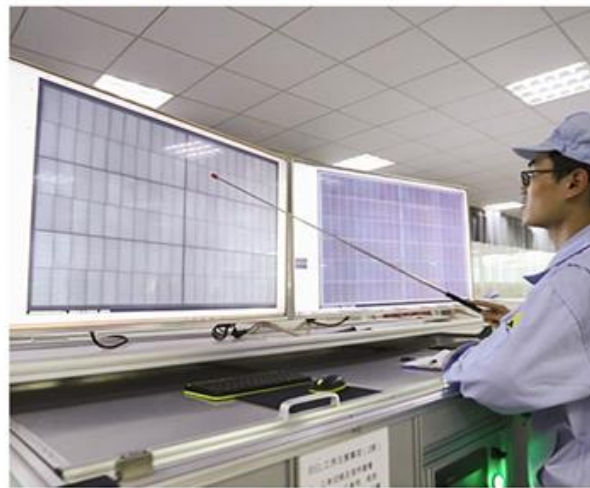




PHASE 2  
3.5GW 40000m<sup>2</sup>

PHASE 1  
1.5GW 35000m<sup>2</sup>









PART3

CASE STUDY

日本からの太陽光発電スマート製造

LEAP FROM JAPAN TO THE WORLD





# PROJECT REFERENCE



**30MW**

**India**

**2019**



**20.5MW**

**Kazakhstan**

**2019**



**2MW**

**Vietnam**

**2019**



**2.1MW**

**Japan**

**2020**



**2.1MW**

**Japan**

**2020**



**1.2MW**

**Japan**

**2021**





# ROOFTOP SOLAR PROJECTS



**220KW** **Netherlands** **2019**



**1MW** **Vietnam** **2020**



**2MW** **Vietnam** **2020**



**750KW** **Germany** **2019**





# THANK YOU

LEARN MORE ON [WWW.LEAPTONPV.COM](http://WWW.LEAPTONPV.COM)

---

LEAP FROM JAPAN TO THE WORLD